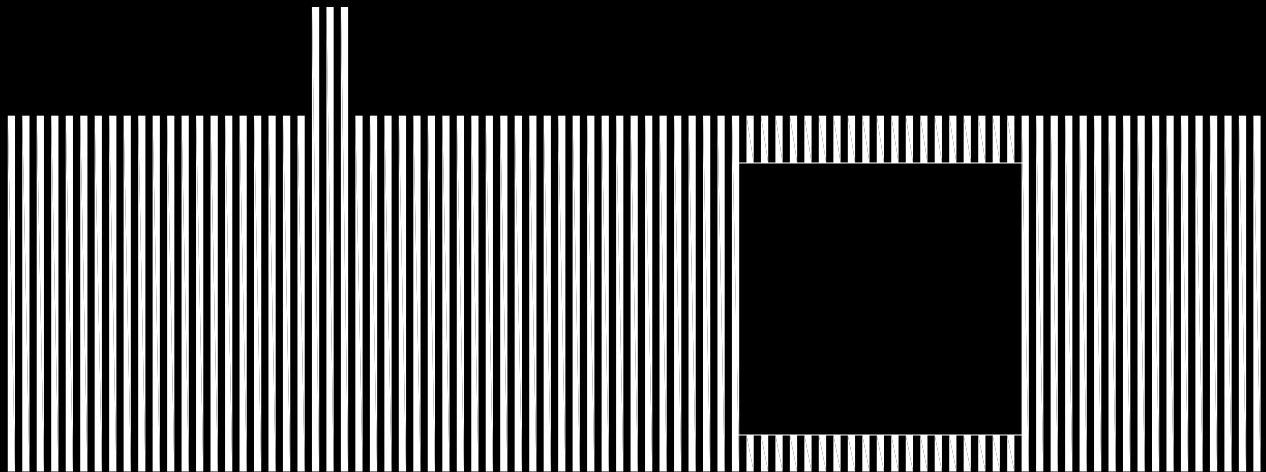


# ark-shelter

Bvba



mobile architecture

[www.ark-shelter.com](http://www.ark-shelter.com)







---

#### philosophy

ARK seeks to provide a place to live 'into the wild', back to basics. With the folding sides opened ARK takes in the landscape and becomes an extension of its surroundings. The panoramic view and low impact makes it more than ever possible to enjoy camping without giving in on luxury.

-A silent place to appreciate your long lost touch with nature-

-A cosy house to find your inner self-

ARK offers all of this without giving in on luxury. The natural warmth of ARK's wooden space and crackling fire place creates a warm and loving atmosphere where the only thing that matter are you and the people you love.

---







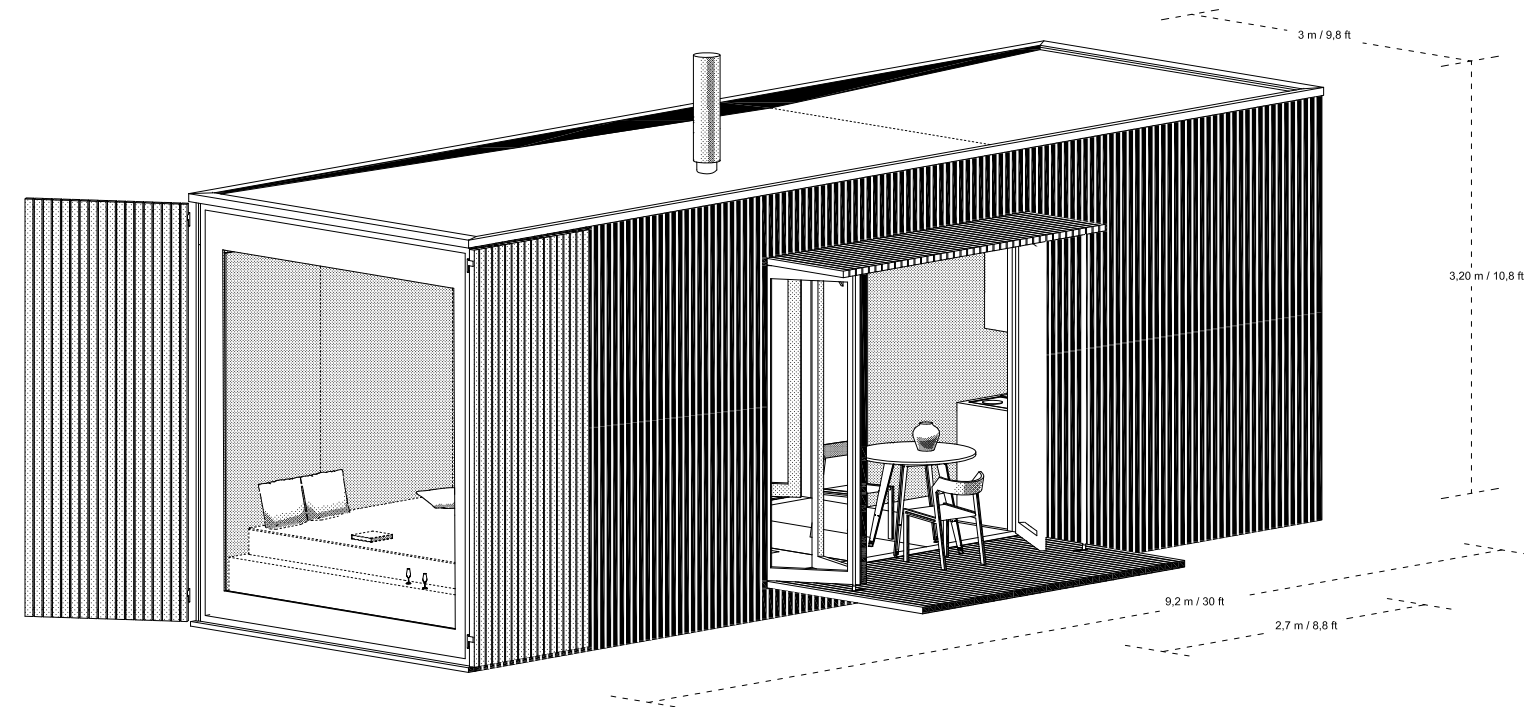
#### back to basics

Increasing population, densification and ever-stricter environmental requirements made us reinvent the possibilities to build and live our lives. ARK proves to be a compact, efficient, resilient and ecological design. ARK varies its uses ranging from a compact refuge for the weekends, small showrooms for events, offices, pop-up stores, garden or pool houses up to hotels or inns. The units are 100% prefabricated, delivered as one container sized package on site and elevated to the place of your choice.

This results in a minimum of on-site work. When delivered we install in less than four hours. Every shelter is a wooden handcrafted design and we believe in optimizing all our products to your requirements. This makes every unit a unique work of craftsmanship

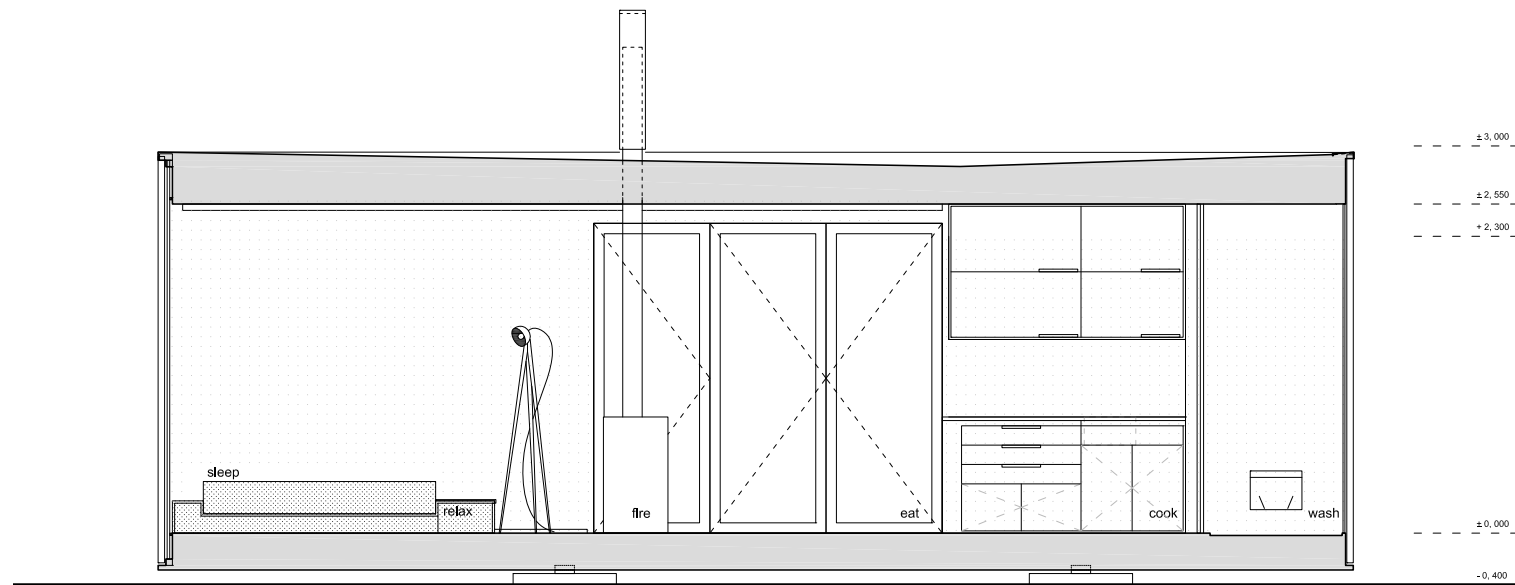
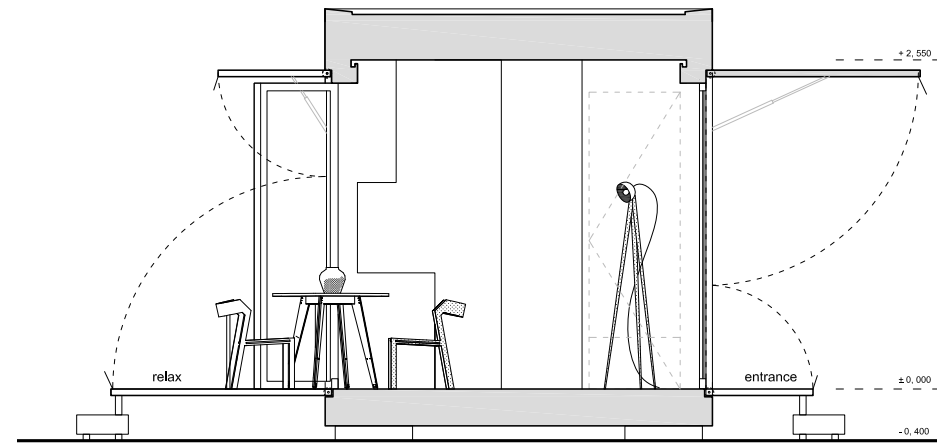
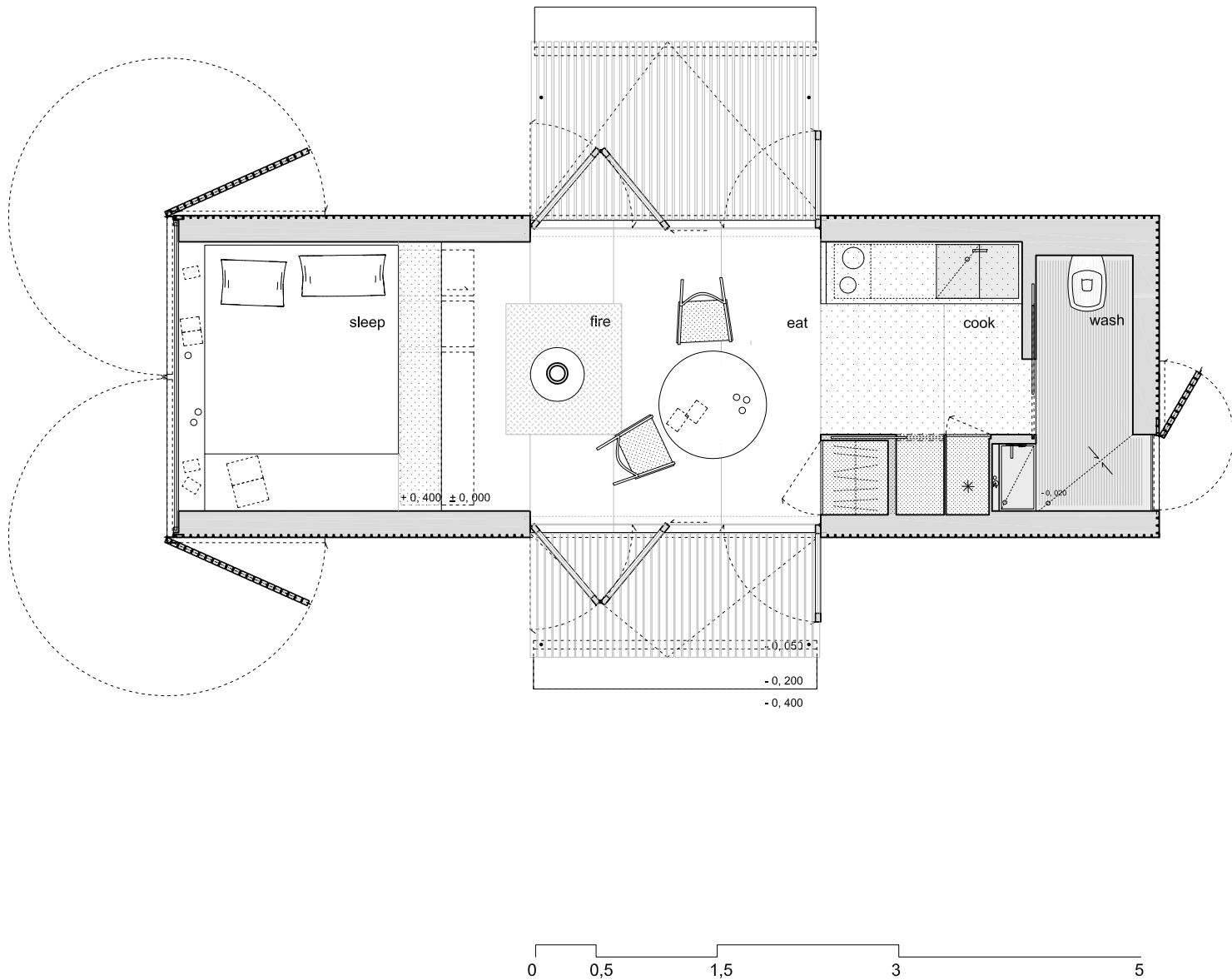






#### proportions

With its zero impact, ARK leaves the surrounding nature untouched. Its minimalistic design doesn't have the ambition to stand out but wants to merge with the landscape. Your shelter provides you the ability to enjoy nature by becoming part of it, directing all attention to the wonderful view. Even if you close your new home from the outside, natural light will play an inspiring role in the interior. The wooden construction is three by nine meters and placed on mobile foundations; making the building float above ground protecting it from rising damp and helping natural ventilation. The roof is fitted with a rainwater collector and filter which makes the shelter self-sufficient.







all inclusive

The idea that camping and luxury are incompatible proves to be wrong with ARK. Our furniture is uniquely designed for the shelter and crafted from the same wood used on walls, floor and ceiling; in order to create a warm and cozy atmosphere. We keep simple elegance high in our standards. Each cabin is a unique piece of art. Every beam is precisely cut to bring about a natural feeling of perfection. The wood we've chosen for the construction of the cabin is sustainable and durable, so ARK will last a lifetime.











placing shelter

ARK provides a total experience. All furniture for the kitchen, bathroom and living area are included and were uniquely designed by ARK for your shelter. The double bed can easily transform into a cosy couch facing the fireplace or the frameless window.











.....  
unlimited possibilities

Where to place your ARK is entirely up to you. Just point out your favourite spot and your new home will be placed. Imagine the possibilities. Camping in grasslands surrounded by wild horses, drinking your coffee in the morning sun, living in the middle of a fairytale forest or watching the sunset on a beach, it's all within your reach. Wherever your imagination takes you, we will make it happen.

.....





Interested ?

Find your place. Point your finger where you want it.

tel. : +32 472 784 510 / [info.arkshelter@gmail.com](mailto:info.arkshelter@gmail.com)



.....

Interested ?

Find your place. Point your finger where you want it.

.....

tel. : +32 472 784 510 / [info.arkshelter@gmail.com](mailto:info.arkshelter@gmail.com)